

Union County Historical Society

"Preserving the Past for the Future"

Summer / Fall 2008



In This Issue:

- Message From The President
- Calendar of Events
 - Rural Heritage Days
 - Programs
- Dale/Engle/Walker House
- News
- Collections
- Library Update
- People Make a Difference
- Membership

QUICK CALENDAR

RURAL HERITAGE DAYS

at the Dale/Engle/Walker property
1471 Strawbridge Road, Lewisburg, PA

Wednesday, August 13, 12 - 4 PM

A fun-filled afternoon for children & adults
Games, Activities and Refreshments

Thursday, August 14, 6 PM

New! *Whatever Did They Wear?*

A narrated 18th century fashion show
with period music and refreshments

Friday, August 15, 6 PM

The popular Hay Ride and Tour of Grove's Mill

Saturday, August 16, 10 AM - 4 PM

All day event celebrating traditional rural skills of
farmers and artisans, men and women.
Demonstrations, Exhibits, Great Food.
Fun for the whole family!

FALL PROGRAMS

Saturday, September 13, 2 PM

Pennsylvania's Timber Heritage

Music, laughter, and culture in a unique
educational program by Van Wagner
at Soldiers' Park, N. Front St., Lewisburg

Thursday, October 9, 7:30 PM

The Story Behind the Austin Dam Failure

"Technical mysteries" and social responsibility
explored in a presentation by Tom Rich
at the Community Center, Laurelton

Thursday, November 13, 6 PM

Annual John B. Deans Dinner & Program

The Horseshoe Curve:

Sabotage and Subversion in the Railroad City

Spy story and historical epic by Dennis McNay
at the Carriage Corner Restaurant, Mifflinburg

Tours and Exhibits

at the historic Dale/Engle/Walker House
Sundays 2 - 4 PM through October

The Union County Historical Society office and reference library is in the Union County Courthouse,
103 S. Second Street, Lewisburg, PA 17837. Hours are M - F 8:30 - 4:30 (closed noon - 1:00).
Visit our website: www.unioncountyhistoricalsociety.org for events listings, updates, articles and more.



A Message from the President

Dear Fellow Travelers to Understanding the Past,

History is too important to leave in the past! Yes, many of you have already heard me say that, and I believe it is true. We all know the adage that those who do not know history are bound to repeat it. My view comes from a different direction. I believe if we do not know history, we do not know who we are.

Think about your family. All those ancestors are relevant and still have much to teach. They showed courage and ingenuity in surviving less convenient and less safe eras. That courage is something they passed on, along with lessons about life. If we forget about them, we are forgetting one of the resources that helps us in times of difficulty. Our ancestors did remarkable things before us, and through their example we can learn much about how to face life today.

Think about your community. The industries and settlements of Union County's past brought wealth to the area and formed the economic and social basis of what our communities are today. People, including our ancestors, came here because of the opportunities our community had to offer. As the towns grew and the countryside expanded, our fore-parents learned to live with each other and help each other. It is that community, thriving today, that helps us to grow as individuals, allows us to share the burden of societal work in order to lessen it, and contributes to the common health and welfare of all. We all benefit still today because of what our community was at one time.

The Union County Historical Society offers the chance to learn more about the history of families as well as of the communities that make up the county. Visit the Society's office in the Union County Courthouse to locate resources and historical reference material to learn more of who you are and who we all are as communities. Visit the Dale/Engle/Walker House and property to learn how one family, along with our ancestors, survived and contributed to form a prosperous community. Come to our programs to learn about aspects of life in Union County's past that should be celebrated. Society members also enjoy reading the Society's biennial issues of *Heritage*, in-depth studies based on primary research about Union County's past.

I look forward to seeing you at the Society's programs, researching in the Office, and touring Union County's historical houses, schools, and venues. In case you don't know where those venues are, drop by the Office to pick up a copy of the CD Car Tour entitled *On the Road: History throughout Union County*, and see Union County history come alive from the comfort of your car. Doing history is a great family outing!

See you soon!

Lois Huffines, President

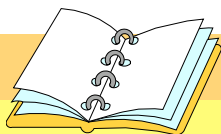


Welcome New Members who have joined since January 2008

Martha Mulfinger of San Marino, CA; George Reish of Aurora, CO; Luann Haney of Wilmington, DE; William J. Jarrett of Largo, FL; James & Lois Dale of Marysville, OH; Thomas F. Sims of Eugene, OR; Kate Wech of Mechanicsburg, PA; Harry M. Campbell of Seaford, VA; Janet Bender, Peggy Candrick, Manuel & Gale Duque, MaryAlice Dock, S. Jackson & Martha Hill, David Hursh, Josh & Angie Muchler, and Dr. & Mrs. Theron Winter, Jr. of Lewisburg; Eleanor P. Gold, Mark Wehr, and Diane & Neil Wright of Mifflinburg; Sarah Geise of Northumberland; Dr. & Mrs. Richard A. Sauers of Sunbury, PA. We welcome new Life Members Bill Clemens of New Columbia and Eleanor Rawitz of Lewisburg.

Many thanks to those who volunteer at the Society office on Fridays: Judith Blair, Jack Fisher, David Goehring, Bill Koons, David Milne, and Glenda Sheaffer.

This is a great way to help the Society - by serving our members and visitors on Fridays. This is also a chance to spend time in our research library learning more about Union County. Won't you consider volunteering? One Friday morning and/or afternoon per month, or whenever suits your schedule. Training is provided.



CALENDAR OF EVENTS

RURAL HERITAGE DAYS

A Celebration of Traditional Rural Skills

at the **Dale/Engle/Walker Property**, 1471 Strawbridge Road, Lewisburg, PA

Directions from Route 15 in Lewisburg, take Route 192 west 1.5 miles, turn right onto Strawbridge Road and travel about 1.4 miles to the property. PennDOT signs are posted.



Wednesday, August 13 from Noon to 4 PM

A fun-filled afternoon for all to enjoy!

Children's Old-fashioned Games with Prizes ~ Animal Exhibits ~ Pony Cart Rides ~ 18th-Century Rope Walk ~ Refreshments and Fresh-made Ice Cream ~ Demonstrations of Rural Farm Skills: Butter, Soap, and Noodle-making, Carding and Spinning, Sewing and Washing ~ Corn Husk Dolly and Sewing Activity ~ Hit & Miss Engine ~ Tour of Original 1793 Kitchen ~ Exhibits ~ No admission fee

Thursday, August 14 at 6 PM

Whatever Did They Wear?

NEW this year! A narrated 18th century fashion show with period music accompaniment.

Women re-enactors will show simple and elaborate clothing while men re-enactors will play a variety of games. The local chapter of the Daughters of the American Revolution will provide traditional cookies, cakes, and Patriotic Punch. Bring chairs for this fun educational event for everyone in the family ~ No fee

Friday, August 15 at 6 PM

Wagon Ride and tour of the 19th-century Grove's Mill which operates with a horizontal water wheel.

This popular evening excursion begins and ends at the Dale/Engle/Walker House.

The mill is one of the few remaining of its type.

Prepaid reservations required ~ \$6/adults and \$4/children for ride and tour ~ Call 570-524-8666.



Saturday, August 16 from 10 AM to 4 PM

An all day celebration of traditional rural skills!

All Day Chicken Barbecue and Corn Roast with Fixings plus Fresh Ice Cream ~ Draft Horse Wagon Rides ~ Music ~ Activities Focus on Rural Skills: Quilting, Cross Stitch, and Sewing Demonstrations ~ Blacksmith, Wheelwright, Horse Shoeing, Tinsmith and Gunsmith Demonstrations ~



Hit & Miss Engines Making Rolling Pins, Bats, Boxes, and Shingles, Threshing and Binding Rye ~ Bed Tick and Flour Bag Stuffing ~ Corn Husk

Mat and Straw Hat Making ~ Rye Straw Basket Making ~ Rug Hooking ~ Leather Ball Making and Juggling ~ Butter Print and Stone Carving ~ Open Hearth Cooking ~ Rail Fence Making ~ *Aprons, Samplers and Forest to Product Exhibits* ~ Wagon Shed Tools Exhibit ~ Donation for parking.

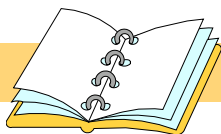
Dale/Engle/Walker House and Wagon Shed Tours

Sunday Afternoons 2 - 4 PM June through October

The Georgian-style house, completed in 1793, is typical of limestone farmhouses of the period in Union County and has had only slight changes over time. An addition was built in the 1840s and the long porch in the 1880s. The interior maintains much of its original woodwork and flooring. The early kitchen, in the lower level, contains a large limestone firebox, original timber lintel and mantle, and wrought-iron cooking arm. The house tour focuses on architecture, early immigration, slavery, and the Underground Railroad. The original owners, the Dale family, were one of the few slaveholders in Union County.

The Wagon Shed, constructed in 2006 on an early foundation, contains period equipment and tools from the Society collection representative of late 1800s and early 1900s farming and dairying. An interactive audio station, reading panels and illustrated notebook aid in appreciating the exhibit.

Your hosts and guides are members of the Society who generously donate their time and talent.



Fall Programs

Saturday, September 13, 2 PM

Pennsylvania's Timber Heritage presented by Van Wagner
at Soldiers' Park, N. Front St., Lewisburg, PA

Van Wagner, songwriter, historian, and Pennsylvania logger has developed a program celebrating the past and present of the Pennsylvania timber industry. Wagner is a native of Danville. He worked for Daniel Logging in Idaho and many independent logging projects in Pennsylvania. His songs have been performed all over the world and featured in several film productions.

Enjoy this unique program as Wagner takes you on a journey through Pennsylvania's timber heritage, telling how timber was harvested over the past several centuries and most importantly WHO harvested it. Wagner demonstrates dozens of tools spanning 200 years of logging history. The program focuses on the rafting days when millions of board feet of Pennsylvania Timber were assembled into various styles of rafts which were piloted down our streams and rivers. Wagner was part of a group who built and piloted a 105 foot timber raft down a section of the North Branch of the Susquehanna River. It was the first time a raft traveled that portion of water in a century.

A little bit of music, a little bit of laughter, and lot of culture make this unique educational program a reminder of why we should be proud to be from the Timber Country of Pennsylvania. Find out more at <http://www.vanwagnermusic.com>.

Please bring chairs to this outdoor event. In the event of rain, the program will be held at the First Presbyterian Church, 18 Market Street, Lewisburg. This program is free and open to the public.

Thursday, October 9, 7:30 PM

The Story Behind the Austin Dam Failure by Professor Tom Rich
at the Community Center, Laurelton, PA

While many are familiar with the Johnstown Flood of 1889, another significant dam failure in Pennsylvania occurred twenty-two years later in the town of Austin in Potter County. The dam was built to impound water for the paper making industry in Austin, which was an important part of the lumbering industry in north and central Pennsylvania. In his presentation, Prof. Rich will tell the story behind the design, construction, and ultimate failure of this early concrete dam and the subsequent disaster in the town below it. An interesting part of the story involves several "technical" mysteries. Correspondence between the design engineer and the dam's owner along with other period documentation provide important insights into social responsibility leading to the question: how should society protect the public from the misuse of technology?

Prof. Rich earned his bachelor's degree in mechanical engineering (M.E.) from Carnegie Mellon University and his doctoral degree from Lehigh University. He is currently Professor of M.E. and holds the Rooke Chair in the Historical and Social Context of Engineering at Bucknell University. He has taught at Texas A&M University and the University of Southampton, England, and served previously as Dean of Engineering for eleven years at Bucknell. He has written an electronic CD book documenting the canal, cement, iron & steel, and waterworks history of engineering and technology of Pennsylvania. Rich served as Senior Fellow in the Society and Technology and Environmental Residential Colleges at Bucknell and is currently a member of the Union County Historical Society Board.

This program is free and open to the public.

Now through October 25 ~ Tuesday - Saturday 10 AM - 5 PM

On Market Street and Around the Corner
at the Packwood House Museum, 15 N. Water Street, Lewisburg

A look at the development of Lewisburg through photographs, artifacts, and texts. This must-see exhibit contains many items on loan from the collection of the Union County Historical Society.

November 13, 6 PM
Annual John B. Deans Dinner and Program
The Horseshoe Curve: Sabotage and Subversion in the Railroad City
at the Carriage Corner Restaurant, Mifflinburg

Program

The featured speaker at the annual dinner is Dennis P. McInay, author of *The Horseshoe Curve: Sabotage and Subversion in the Railroad City*. McInay's book tells the true story of three inter-connected—but little-known—events in American history:

- The World War II Nazi plot to destroy the Horseshoe Curve, near Altoona, Pennsylvania, which, if successful would have crippled the American war effort
- The little-known internment by the United States government of 15,000 German and Italian Americans during World War II and the FBI's arrest on July 1 and 2, 1942, of 225 Altoonans as "alien enemies"—suspected Nazi sympathizers
- The personal and organizational drama of founding the Pennsylvania Railroad and building the Horseshoe Curve, among the greatest achievements in transportation.

Part spy story and part historical epic, *The Horseshoe Curve: Sabotage and Subversion in the Railroad City* blends information from 300 sources, including diaries, biographies, military records, histories, engineering studies, court briefs, and FBI files that McInay acquired through the Freedom of Information Act.

McInay is also author of *Juniata, River of Sorrows*, published in 2003, one of the best selling regional books in the United States. That book tells the story of McInay's 15-day float trip down the Juniata River and important historical events on the Juniata in the 1600s and 1700s. McInay is a highly regarded professor of management at Saint Francis University. He lives with his wife, Kathy, in Hollidaysburg, Pennsylvania, ten miles from the Horseshoe Curve.

Dinner

The popular buffet dinner, with choice of entree, sides, salad, dessert and beverages will precede the program. Awards for historic preservation and service to the Society will be presented.

Local members will receive reservations forms in the mail in October. Others who wish to attend the dinner and program should contact the Society by phone, email, or mail.

SUPPORT YOUR HISTORICAL SOCIETY



Microfilm Project

The Society research library has a comprehensive collection of microfilm records including: population schedules (census) from 1790-1930, tax assessments 1792 to 1881, mortality reports, manufacturers reports, agricultural census, Sanborn maps, and more. These records contain invaluable information for researchers, helping to establish family lines, locating ancestral lands and adding to the stories of our county.

Microfilmed newspapers range from the New Berlin-printed *Union Annalist* 1834-1835 and *Union Times* 1834-1855, through the *Lewisburg Chronicle* 1847-1912 and *Lewisburg Journal* 1910-1952 to the *Mifflinburg Telegraph* 1862-2002. Newspapers offer a wealth of material on the events, attitudes, and thoughts of the time,

interesting advertisements and photographs, and details on politics, business, and individuals.

Also on microfilm are phone directories of various years from 1899 to 2002. These directories provide glimpses into the social and business history of the county.

All microfilms can be read on our in-office reader, and copies made for reference.

The Society is seeking sponsors for microfilming the Buffalo Valley Telephone Directories for 2003 to present.

Funds are also requested for continuing the newspaper files for both the Lewisburg paper and the Mifflinburg Telegraph.

Anyone interested in helping with this important project is asked to contact the Society office: 570-524-8666 or hstorici@ptd.net



DALE/ENGLE/WALKER HOUSE

“History Alive” at the Dale/Engle/Walker Site
by Jeannette Lasansky

Those of us who love to read about historical events, places, and people, often find it hard to fathom that there are some who seem to have no interest in history, and that there are others who seem determined to turn their backs on history, even tear it down. People who participate in our county-wide 4th and 5th grade historical tours, host and guide at the Dale/Engle/Walker house, volunteer at the Society's office in the courthouse, or research their own or local history, feel that we are surrounded by eager young people and similarly interested adults. And we are! However, we need to constantly broaden the appeal of history and maintain its relevance.

Each part and program of the Society can accommodate a journey, including the 1793 Dale/Engle/Walker House. Now owned by the Society for seven years, open to school tours and house tours for six years, and hosting Black History month programs and Rural Heritage Days events for five years, we might reflect on what this site has brought forth in ourselves and others.

Much of what we have discovered about the first owners is presented in our Heritage book for 2008—*Samuel Dale (1741-1804): A Life and Estate in Union County*. The book discusses the forces that propelled a young man to leave Northern Ireland and settle in a new country that was about to be engulfed by the American Revolution. It indicates the depth and breadth of his intellectual interests as revealed in the 318 books that Dale left behind when he died in 1804. It covers the institution of slavery in the North and the myth that the house served as a stop on the Underground Railroad. It describes the buildings on the property, their parts and functions, their construction and relevance.

The Engle period from 1929 to 1957 and the Walker period from 1957 to 2000 are two other periods for us to interpret; the Engle period, in part, is presented at the Wagon Shed.

Historical research is presented at the house for one of the Society's many programs when the topic is relevant to the setting. And every February, we focus on our local African-American history during national Black History Month. These presentations, often given by people in the midst of their research, allow us to sense the excitement and the complexities of their work. The Society's research on African-Americans in Union County, both free and slave, has been prompted by the ownership of the Dale house, which was a slave site from 1793 to at least 1840. (Pennsylvania did not have total abolition until 1847.) This information, largely absent



from previously published local histories, will be presented in a forthcoming Heritage. In the meantime, Black History Month events will keep you informed and challenged to reflect on our past.

Interpretation of our local history occurs at the site at special events like our four-day Rural Heritage Days. Nearly 100 members and friends volunteer to bring history alive for you and other visitors through demonstrations, hands-on activities, exhibits, tours, wagon rides, talks, and various sights, sounds, and smells. In other words — a sensory feast of living history. This year Rural Heritage Days will be better than ever with demonstrators and hosts in period dress relevant to the skill they are presenting, whether it be 18th-century hearth cooking or early 20th-century binding and threshing. Rural Heritage Days is happening right in your back yard!

Interpretation uses all aspects of the property: the surrounding farm fields and lanes, the newly reconstructed wagon shed, the house and its lovely porch, and the lawns. Next year the milk production house will be added with the initial stage of a permanent dairy display. One new physical change has been reclaiming the former truck patch/pasture directly behind the house, where cows pastured during the Walker era. Other changes being discussed are sugaring off of maple trees when the sap runs in March, re-establishing some of the farm's orchard, and raising a barn on its former foundation.

In all these activities it never ceases to amaze how many friends the Society has and how they identify with the property by giving their support. No better example is Roxy Carl who has taken the transformation of the tiered gardens a huge leap forward. She has reset much of the stone wall and tended to old and new plantings. Other nonmembers who have given time or materials this spring and summer include Eastern Industries (reworking the farm lane and the trail parking area), Union County Conservation District intern Matt Swallow on the control of invasive plants, excavator Eric Imgrund, and painter Jim Arndt. Conservancy members Wayne McDiffett, Ben Hoskins, Geoff Goodenow, Carl Oberheim, Diane Donato and John Tonzetich, and Bucknell University students and a sorority on the spring work efforts

Members who have worked hard on the grounds include Jake Engle, Bill and Billy Deitrick, Mike Manbeck, Roger Curran, David Goehring, David Milne, Diane Meixell, and William & Jeannette Lasansky. Others involved in planning projects for the possibility of geothermal heating at the site

include members Tom Rich and some Bucknell civil engineering students; for the possible barn reconstruction: Gary Spangler, Eli Reiff, Bill Clemens, Bill Deitrick, architect Ted Strosser, William & Jeannette Lasansky, and David Goehring.

Forester Tom Strausbaugh presented the Society with a land management plan for the 58.5 forested acres of our 137-acre property. Wayne McDiffett and Allen Schweinsburg shared their knowledge of the property with Tom in the initial stage and in the plan's review. Copies of the 10-page document are available to anyone interested in reading it. We thank Tom for the extensive time and thought in bringing this together, based on his years of experience at Bald Eagle State Forest. Some immediate action was taken, and this fall Bucknell geologist Duane Griffin and his students will address other sections that need control of invasive plants.

If you have not yet gotten involved with "history alive" at the property and would like to consider it, please contact either Eli Reiff, Bill Deitrick, Jeannette Lasansky, Gary Spangler, Bill Clemens, Ted Strosser, Ron Wenning, Diane Meixell, or Carol Manbeck, the office manager.



1793 Dale Hearth, a print by local artist David Seybold is available at the Society office and will be for sale at Rural Heritage Days. This beautiful limited edition print depicts the restored hearth with period cooking implements from the Society's collection.

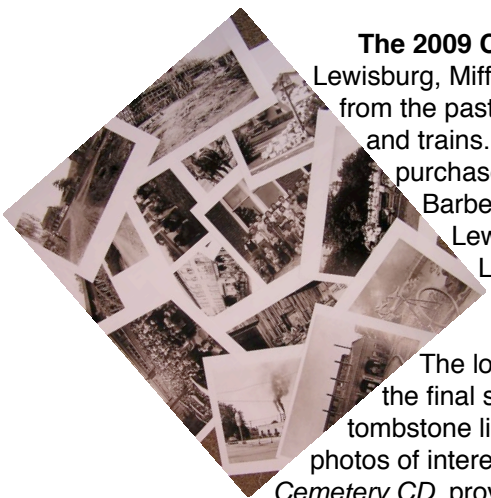
NEWS

The Apron Memories exhibit opens at the Dale/Engle/Walker House August 3 and runs through October. Aprons worn by women and men, for all manner of household and farm tasks will be on display.

In conjunction with the exhibit the Society has for sale *The Apron Book: Making, Wearing, and Sharing a Bit of Cloth and Comfort* by EllynAnne Geisel. This lovely book offers historical details on apron styles and fabrics, and small personal stories, plus directions for making popular aprons. Many full color photographs compliment the text. The cost of the book is \$16.95 plus tax.



The 2009 Calendar, available soon, includes photographs of Laurelton, Lewisburg, Mifflinburg, Millmont, New Berlin, and West Milton. The wonderful scenes from the past show buildings, businesses and bridges, school children and adults, and trains. The calendar debuts at New Berlin Days and thereafter can be purchased at the Society office and selected merchants such as Ziegler's Barber Shop, Wagner's Stationery, Ard's Market and Country Cupboard in Lewisburg, Country Farm & Home and La Vieille Maison in Mifflinburg, the Laurel Market, and many local banks. Calendars are only \$5 plus tax.



The long-awaited **Union County Cemetery CD** is in the final stages of production. This CD will contain tombstone listings for all cemeteries in the county, with photos of interesting stones. It compliments the *Lewisburg Cemetery CD*, providing researchers with a full listing of readable stones in the county. The revised and up-dated county cemetery listing took several years, as researchers walked the county cemeteries to confirm the data. This material will also be available in printed form in our office. [Note: those who have previously ordered the CD can call or email to confirm their order.]





COLLECTIONS



Archives and Museum Committee

The spring and summer months have seen new exhibits from our collection in the Union County Courthouse, the Union County Government Center, the Dale/Engle/Walker House, Mya's Café, and at Packwood House Museum.

The Valentine collection of the late William Ruhl, which had been donated several years ago, was on display at the courthouse, followed by the current exhibit featuring 18th-century hearth equipment and the new David Seybold print that features the 1793 Dale Hearth.

Outside the courthouse office, is a display of new gifts and acquisitions. At the Government Center our Union County gristmill display can be seen until late November.

The Dale/Engle/Walker house has the exhibit *From Wood to Finished Product* with local oak baskets made in Forest Hill and Laurel Park, wooden advertising rulers, local molding planes by Yost, marked furniture by William Ginter and Charles Bell, and more. The exhibit *Apron Memories* features men's and women's aprons from past eras. These exhibits can be seen Sunday afternoons at the House through October.

The Society worked jointly with Packwood House Museum to gather items from the Society's collection that focus on the development of Lewisburg from the canal, the railroad, and the automobile eras. Nearly 130 loaned objects, both small and large, can be seen through the end of October at the Packwood House exhibit including a Lewisburg-made corn sheller, Buffalo Valley Telephone equipment, bank and local business memorabilia, and much more.

Gifts to the Collection

Gifts to the Society's collections from August 2007 through May 2008 has come from:

- Member Helen Royer: AARP (disbanded) scrap books from 1968-2008;
- The Mifflinburg Bicentennial Commission: a number of Sesquicentennial pins, wooden nickels, ribbons, and bonnets that were not in the collection;
- Member Wilma Mattioli: from the 1960s, a menu from Tony's Pizza in Lewisburg;
- Anonymous: "Sure Cures for Hunger Cookbook" by Evangelical Hospital staff and auxiliary;
- Kathy Kline: photographs of Lewisburg High School reunions and of the Bergers of West Milton;
- Member Mike Manbeck: 2008 Beaver Run Country Store, Fisher Meats, and Swineford Bank calendars;
- Robert Seebold: over seventy-five advertising items such as key chains, commemorative booklets, blotters, envelopes, aprons, rulers and tape measures, pens, sale bills from area dairy farms and area businesses, area gas stations, paint stores, county political ephemera, Lewisburg Civic Club material, POSA of West Milton, Mifflinburg, West Milton and Lewisburg banks, and more;
- Member Jeffery Spotts: a buck saw for the wagon shed;
- Mary Dill: photographs of the paving of the Lewisburg Bridge on March 5, 1936 and of the flood at the Lewisburg Woolen Mills and the corner of 6th and St Louis 1865-1894 as well as programs from Lewisburg High School and Bucknell from 1898-1917;
- Jim McClure: J.D.S. Gast (Mifflinburg) newspaper ad;
- Raymond Minium: photograph of R.M. Minium & Sons Pipe Organ building;
- Margaret Ritter: framed water color paintings of Lewisburg scenes - one of houses on S. 5th Street and the other of Market Street on the north side between 5th and 6th Streets, and numerous books by Mary Belle Lontz and others;
- Kenneth Saylor: Swengel postcard;
- Barb Shively: deck of Mifflinburg Varsity football cards;
- Member Larry Kemmerer: mugs from Old Turnpike Restaurant, county courthouse, and Lewisburg Lights, bank deposit bag for Northern Central Bank, desk ruler commemorating 25th Anniversary Dr. Larry Ginsberg, stationery from Lauver's Television and Radio Service, Lewisburg;
- Member Jim Walter: Bicentennial champagne glasses 1792-1992;
- Paul H. Fisher: original journal entries of Capt. Jacob Hummel (1780-1860) and his Company Roster (War of 1812);
- Member Nancy Neuman: 17 carte de visites from Lewisburg and Mifflinburg photographers;
- Joanne Shannon: newspaper article about Herbert Stover, local author;
- Member Jean Ruhl: Buffalo Valley Telephone annual reports 1988, 1990-1995;
- Member Mary Belle Lontz: baptismal certificate for Donald Calvin Ruhl, born in Lewis Twp., Dec. 9, 1910;
- Packwood House Museum tag sale: record from 1948 of The Lewisburg High School Band playing the Russian Sailor's Dance, recorded by Ely Recording, Mt. Holly Springs, PA;
- Member Virginia Nunley: 70th Anniversary booklet of St. John's Reformed Church 1927 and Centennial address of Rev. J. A. Ernst;

- Fred Oyler: 3 leather bound New Berlin books (1838-1842), 2 leather bound books from Lancaster (1803) and Philadelphia (1813);
- Jeff Mensch: stock certificate from the First National Bank, New Berlin 1912;
- Gloria Myers: 1935 Civil Engineers' plans for Linntown;
- James Hartley: 40 unidentified portraits some by Slear of Mifflinburg or Lindig studio of Lewisburg; and
- Owen Mahon: Herander Pontiac nameplate and Haine's shoes advertising fan.

Purchases include

- some wonderful real photo postcards as well as some recent ones. The areas covered include: Chamber's Creamery, White Deer Bridge when opened in 1928, commemorative marker for Shikellamy's old town;
- other special postcards include a double-width litho card of River Road near Slifer House; extra long card for Colonial Crest Motel and Restaurant; horse riders in Hairy John's State Park;
- calendars for Guy Schreck contractor Lewisburg 1973, for Mazeppa Mills 1958, for Glen Dornsife funeral director 1964, for Heimbach Lumber Lewisburg, 1959, for Shirk's Store, Millmont 1968;
- an advertising top from Burry's, Mifflinburg Hardware fan, Mifflinburg Farmer's Exchange egg separator, Klose ash tray; Feese's Grocery (Lewisburg) hot pad; W.L. Burd & Co. (Swengle) welding booklet, aluminum card tray of the United Evangelical Church in Mifflinburg;
- rare 1880s autograph albums from Swengle and White Springs;
- recent recipe book from Weis Markets, Mifflinburg;
- blotters from C.L. Strausser Lumber, Lewisburg, and Champion Shoes, Lewisburg;
- 15 large architectural photographs from 1926 of Laurelton Village by its architect George Idell of Philadelphia;
- Sesquicentennial booklet Evangelical Church and St. John's UCC 1957 anniversary plate;
- 1914 and 1916 preaching services and Sabbath worship hours of the White Deer Charge Reformed Church;
- China luster souvenir shoe from Lewisburg and china luster cup and saucer with Market Street scene, made for Harry Hoffman, Lewisburg druggist;
- Frank Feese (Mifflinburg) shoe lacer and Irey (Lewisburg) shoe horn;
- A.B. Smith soda bottle from Mifflinburg;
- Dedication booklet for Millmont Post Office in 1961, Vicksburg 1990 125th Anniversary booklet;
- Rare, small tin type by Nice of Lewisburg of George Hall, brother of Neth Hall, minister;
- 1987 Bilger's Blacksmith Shop calendar, 1953 Washington Presbyterian Church, Allenwood, calendar;
- other advertising items from Gebhart's Esso Station (East Lewisburg); and
- the 125th Anniversary booklet of St. Peter's Evangelical and Reformed and St. John's Lutheran churches of Kelly Township (1944).

Some of the postcards are in the new 2009 Historical Calendar on sale at the office in the courthouse, at the Dale/Engle/Walker House on Sunday afternoons, Wagner's Stationery, Packwood House Museum, among other places.

Found locally

- New Columbia Sesquicentennial plate, a towel holder advertising Campbell's Mill in its original box, calendars of various local businesses, including two of B.O. Dauberts in Lewisburg that has 1940s kitchen and bath fixtures, 1907 Lewisburg Trust (bank) charter book, old glass pharmacist bottles from Baker's in Lewisburg, and an old Lewisburg High School pennant;
- Also, a medal/ribbon from the White Deer Grange from the early 1900s, advertising yard sticks from Reber's Stoves in Lewisburg and Keister's Furniture in Mifflinburg, advertising thermometers for Wittenmeyer's furniture in Mifflinburg and for Yagel's Accounting in Lewisburg in 1958; and
- 125-pound blacksmith anvil and hardy tool for forging rings, for the Dale/Engle/Walker wagon shed.

Giving to the Society

For information about gifting Union County-made items to the Historical Society, please contact Archives Committee members: Forrest Fothergill, Jeannette Lasansky, Mike Manbeck, Dan Sachse, Donna Slear, Jeffrey Spotts, or Gary Spangler. Or contact the Society office by mail, phone, or e-mail. Gifts are tax deductible to the extent allowed by law.

A membership flyer is enclosed with this newsletter. Please share with friends or relatives so that they may join the Union County Historical Society in *"Preserving the Past for the Future."*

RESEARCH LIBRARY UPDATE



Added to our family books and newsletters

Thomas Donachy and Mary Slypher, Family Group Record
Dunkle Dreisbach Family History, given by George Reish
Finsterbush Family History, donated by Tom Finsterbush
History & Genealogy of Henry Glatfelter (1753-1833) given by Miriam Dittenhafer
Joseph Hartley/Ellen C. Boop Family Tree (partial), given by researcher James W. Hartley
Walker Family by Rev. Robert Stoudt, given by Mary Belle Lontz

Added to the library

Early History of Lewisburg by Mary Wilma Massey, Bucknell University 1935, from the Lewisburg Journal
April 4, 1935 article "Social Life on the Lewisburg Frontier"
History of Penns Creek by Mary Belle Lontz, donated by the author
Union County Times 2007

RESEARCH

Recent visitors to our library have been looking into the following families and topics.

If you have information to share, please contact the office or the researcher.

BAKER, CHARLES: Maridell Mason, 840 Chadwick Circle, Frederick, MD 21701
BAUM: Jim Renn, RD #1, Box 302, Sunbury, PA
BENNAGE: Paul & Anne Plaisance, 232 2nd St #A, New Columbia, PA
BOWMAN: Loretta Nixon, 260 W. 2000 N., Mapleton, UT
BOYER/VANATTA: Mike & Sue Remm, 542 SE 13th St., Pompano Beach, FL
BROWN/STUCK/SHUCK/ALBRIGHT: Kathy Wech, 1224 Highlander Way, Mechanicsburg, PA
BUSS/FISHER: Glenda Yost, 228 Broadway, Turbotville, PA
DALE, Samuel: Jim & Lois Dale, 507 Fairwood Dr., Marysville, OH 43040
EAKER/BLYTHE: Dale Dutoi, 64223 Miami, Bremen, IN. dutoi:34@juno.com
ENGEL: Chip Engle, 107 Daisy Lane, Justin, TX
FORREST: Andre Dominguez, 254 W. 4th St., Bloomsburg, PA
HOY: Eleanor Hoy, 100 E. Walnut St., Mifflinburg, PA; Joyce Adgate, 110 Lisk St., Howard, PA
KING: Bobby Buss, 595 Spring Creek Rd., Montgomery, PA
LYONS/GORDON: Ella Haley, 109 E. Keller St., Mechanicsburg, PA
MITCHELL: Harry Mitchell, Jr., 2574 Johnson Mill Rd., Lewisburg, PA
OVERMYER: Tony Triplet, 64773 Miami, Bremen, IN
RHOADS/WILT/BARNER: Kathy Nay, 968 Ravine Rd. S., St. Johns, FL
SANDERS/SARGENT/SELTZER/HOSTERMAN/KINNEY: Sue Sanders, 57 1st St., Plainwell, MI
TRUTT/POETH/HOOD/SCHAEFFER/BURD/MEGINNEY/BOYER:
Frances & John Reinsburrow, 998 Pete's Camp Rd., Southport, NC
ULCH: George Ulch, 3255 Regal Cr., Longwood, FL
VONEIDA: Mary A. Barder, 220 Eutaw Ave., New Cumberland, PA
ZEIBER/ Zeiber Dairy: Mr. & Mrs. Zeiber, 918 Mahoning St., Milton, PA



We are grateful for researchers Jack Fisher, Mary Belle Lontz, and Glenda Sheaffer, who assist our staff and visitors with family genealogies, land searches and topical research.

NEW! STUDENT MEMBERSHIP

In order to encourage more young people to join the Society, the Board of Directors has approved a new Student Membership Level. Children in grades through High School are eligible for an annual dues rate of only \$10. This entitles the student to free use of our reference library (great for class assignments and Senior projects), our newsletters, and reduced prices on our books and at events.

A Student Membership would make a nice gift for your young relative or friend who is interested in history. Forms are on our website www.unioncountyhistoricalsociety.org and at the Society office.

PEOPLE MAKE A DIFFERENCE

Board of Directors - The nominating committee proposes the following individuals for election to the Board at the September 13 meeting of the Society:

Jonathan Bastian - A resident of Mifflinburg, Jonathan has been a member of the Society since November 2004. In 2001 he started research on the Pardee Lumber Company, which was located near a cluster of cabins known as Pardee. His book, *Lumbering - A Way of Life at Pardee 1886-1903* is the result of his research. Jonathan's grandparents have been active volunteers for the Society for many years, and he now continues this tradition. Jonathan is a senior at Mifflinburg Area High School, volunteers at Evangelical Community Hospital, and plans a career as a Radiologist after graduating in 2009.

Diane Meixell - A Lewisburg resident, Diane currently is on the boards of the League of Women Voters of Lewisburg Area, the Lewisburg Cemetery Association, the Lewisburg Downtown Partnership, and SUMCD, Inc. She is Secretary/Treasurer of the Eastern Union County Supplemental Food Program. Diane is active in the Society on many projects and will serve as Secretary.

David Milne - Born and raised in New York City, Dave served in the U. S. Army and then earned a Ph.D. at Cornell University. In 1964 he moved to Union County where he worked as a professor of psychology at Bucknell University for 35 years, including 10 years as department chairman. Dave will continue as Society Treasurer and is a Friday volunteer.

Gary Spangler - A New Berlin resident, Gary Spangler, graduated from Mifflinburg High School in 1962. For 38 years, he was a partner of Spangler Brothers, Inc. general contracting firm. He has been an active member of the Society's

Archives and Museum Committee for nearly five years and is particularly involved with furnishing the reconstructed wagon shed at the Dale/ Engle/ Walker property. Over the last three years under his leadership more than 250 large and small items have been donated. He has been in charge of their assembly and display as well as the interpretation of the building. Gary is also involved with Rural Heritage Days events.

Jeff Spotts - A lifelong resident of Union County, Jeff is interested in local history, auctions, and antique collecting, with an emphasis on early America and firearms, particularly Kentucky rifles built in Union County. He and his wife currently live on a farm that was part of the county's first Amish settlement (pre-Civil War). Jeff serves on the Society's Archives and Museum Committee.

Ron Wenning - From rural Ohio, Ron graduated from Ohio State with degrees in Agricultural Economics and Rural Sociology and minors in Animal Nutrition and Wildlife Management on June 7, 1969. He moved to Lewisburg in 1972. Ron started Wennawoods Publishing to preserve the long lost books on 17th & 18th century Pennsylvania frontier history and Indian history. He is also the owner of Knittle & Frey Ag-Center Inc., Williamsport. Ron and his wife of 39 years, Kris, have a daughter Kelley who lives in Cleveland, Ohio and a son, Scott who lives in Lewisburg.

Continuing on the Board are David Goehring, Forrest Fothergill, M. Lois Huffines (president), Jeannette Lasansky, Josh Muchler, Tom Rich, and Jean Ruhl.

Student Interns

Each summer, the Society is fortunate to have one or two student interns work in the society office and at the Dale/Engle/Walker House, funded in part by PHEAA and the Degenstein Foundation.

This summer we are joined by Justin Rosboschil of New Columbia, and Jamie Keister of White Springs. Justin is a history major at Lock Haven University. At the Society he has researched family and land histories; located information on local builders, masons, and carpenters; and helped maintain the Dale/Engle/Walker property. Jamie will enter Bloomsburg University this Fall as a nursing major. Over the summer she has researched mortality statistics and death records, searched for documentation on local photographers, and worked on our archives database. Both students have hosted and guided at the Dale/Engle/Walker House and helped with numerous everyday tasks in the Society office.

Possibilities

During the school year, September to May, the Society welcomes Bucknell University work study students. Interested students should consult the University's Financial Aid Office.

Local High School students are encouraged to consider the Society for Senior Projects.

Membership in the Union County Historical Society

Your membership supports our annual historic sites tours and Red Bank one-room school experience for Union County students; programs and tours; and the growth of our collection of Union County photos, postcards, account books, diaries, and items made by Union County crafts people. Membership also enables us to restore and maintain the Dale/Engle/Walker House which offers tours, exhibits, programs, and *Rural Heritage Days* events.

Members receive the biennial *Heritage* publication and our newsletters, and a discount on books. Members have free use of our extensive reference library.

Mail this application form to:

Union County Historical Society, South Second Street, Lewisburg, PA 17837

Contact us by: Phone: (570)524-8666 ♦ E-mail: hstoricl@ptd.net

Check out our Web site: www.unioncountyhistoricalsociety.org

Name(s) _____
Address _____
City _____ State _____ Zip _____
Email _____
Phone _____

Please circle membership level:

NEW! Student..... \$10
Individual \$30
Family \$45
Contributor \$60
Patron \$100
Sponsor \$150
Lifetime (individual) \$400

The Union County Historical Society is a non-profit organization. Membership is tax deductible. In addition to membership, donations specific to the Society's work - education, the collection, genealogy, the Dale library, or the Dale/Engle/Walker property - are gratefully accepted. Unrestricted donations are used as the Board of Directors identifies needs. The Society is prepared to accept gifts of appreciated property and planned giving, such as bequests. Thank you for your support.

Union County Historical Society
Union County Courthouse
South Second & St. Louis Streets
Lewisburg, PA 17837

Non-Profit Organization
U. S. Postage Paid
Permit No. 1
Laurelton, PA 17835

Address Correction Requested