

# Union County Historical Society

"Preserving the Past for the Future"



## Winter & Spring 2012



The hearth at the Dale/Engle/Walker House is furnished with period cooking implements.

**Mission:** The Union County Historical Society appreciates and values the role of history as the formative context for today's way of life. The Society is dedicated to enhancing the appreciation and visibility of Union County history, and to that end, it collects, preserves, and interprets historical sites, artifacts, and materials related to the history of Union County. It serves the citizens of Union County and those interested in Union County history by providing educational opportunities through exhibitions, publications, tours, and programming related to the history of Union County and by providing access to the historical artifacts and documents in its collections as appropriate to the safety and protection of the materials.

### In This Issue:

"Looking Ahead for the Society"  
News: Our latest publications  
Calendar of Events: Winter & Spring Programs  
Exhibit: The War to End Slavery  
Collections News  
Courthouse Exhibits  
Research Library Update & Queries  
ACCOUNTS  
People Make a Difference  
Education Coordinator's Report  
Rural Heritage Days  
Past Perfect Update  
Dale/Engle/Walker Report  
Membership form - share with a friend

### CALENDAR of PROGRAMS

Sunday, February 5, 2 PM

**Tour** of hearth and attic at the Dale House  
**Exhibit** of Civil War documents from the collection

Sunday, February 12, 2 PM

***African Americans in Pennsylvania's Civil War Units***

Sunday, February 26, 2 PM

***Let's Take A Look at the Sable Arm***  
African Americans in the Civil War

Friday & Saturday, March 9 & 10, 9 AM-4 PM  
**Maple sugar/syrup demonstration and sales**  
**Scraple and sausage-making demonstration**

Thursday, April 12, 6 PM

Dinner and program  
***Memories of the Union County Sesquicentennial***

Thursday, May 3, 7:30 PM

***The Shorkley Family***

**The Union County Historical Society** office/reference library is in the Union County Courthouse, 103 S. Second Street, Lewisburg, PA 17837. Hours are M - F 8:30 - 4:30 (closed noon - 1:00). Visit our website: [www.unioncountyhistoricalsociety.org](http://www.unioncountyhistoricalsociety.org) for events, updates, articles and more.

**UNION COUNTY  
HISTORICAL SOCIETY**

2012 OFFICERS & BOARD  
Jeannette Lasansky, President  
Deb Wehr, Vice President  
Diane Meixell, Secretary  
Kim Ranck, Treasurer  
David Goehring  
Tom Greaves  
M. Lois Huffines  
Sharon Lynch  
Duain Shaw  
Gary Spangler  
Mary Jo Spangler  
Jeffrey Spotts  
Steve Wilver



**Welcome New Members  
who have joined since August 2010**

Robert Beck, Altoona, PA  
Grant & Kathy Brady, New Berlin, PA  
Sidney Dreese, Camp Hill, PA  
Mary Dunphy, Cogan Station, PA  
Linda Lynn, Lewisburg, PA  
Sally Meginley, Orangeville, PA  
Karen Trate Scheffler, Montgomery, VT  
Mary Shull, Baltimore, MD  
Gerald W. Smith, Atlanta, GA  
Linda Estupinan Snook, Mifflinburg, PA  
Bruce & Michelle Teeple, Aaronsburg, PA

**Welcome New Life Member**

Tom Clark, Selinsgrove, PA

**Thank you to Life Members**

David Goehring, Larry and Clara Ellen Kemmerer, Jeannette Lasansky, Dave Mensch, Marcia Milne, Maryellen Paulhamus, Jerilyn Reniger, Thom Rippon, Jan Ruhl, Harry Snook, Hertha Wehr, and Nancy Wheaton for their donations.

**Thank you to Members and Friends**

Lois Dale for donation to the Dale/Engle/Walker House & library;  
Glen Martin, and Vernon & Norma Martin for donation for research by Jack Fisher;  
Lois Huffines for donation toward scanning photographs for the Mifflinburg book;  
Diane Meixell for donation for transcriptions of the Shorkley diaries.

**Thank you**

to the Lasanskys, the Sauers, & Century 21 of Temple PA for donations in memory of Paul Ernst;  
to Thom Rippon and Jim Walter for donations in memory of Robert Linke;  
to Nancy Neuman for donation in memory of David Milne.



**Looking Ahead for the Society**

In the new year, a way to strengthen the Union County Historical Society is getting involved in things you are interested in, or think you might like to try—at the courthouse office or at the committee or event level.

For example, *Rural Heritage Days* events always need lots of volunteers, many doing specific tasks, and then spending all or part of the day just as any visitor does.



Also, the office in the courthouse has always been staffed with volunteers on Fridays with paid staff the other four days so that we can make our budget go further. Volunteer staffers come in for a morning or afternoon once or twice a month and they become the face of the society. Volunteers are trained to help visitors by learning genealogy skills since many visitors are involved in a “search.” No day is like another.

I would like to announce some members who have already stepped up to serve on some committees (most meeting one to three times a year). Donald Snyder, Sharon Lynch, Russell Dennis, Christina Trapani, Paul Mauger, Kathy Swope, Anne Fox, Wendy Warren, and Rhonda Ritter are joining the Education Committee that plans local history opportunities in our school districts and with home schooling parents. Joining the Program Committee, which brain-storms about presentations for our September, October, November, March, April, and May events, are Eleanor Rawitz and Mary Jo Spangler. Nada Gray, who has lots of experience in archives research, is joining the Archives/Museum Committee, while Rich Nornhold will bring organizational experience and ideas to the Interpretive/Special Events Committee. Pat Longley has agreed to chair the Personnel Committee.

If YOU can consider volunteering in the office please contact Carol Manbeck, the office manager. If committee projects interest you, board members can tell you about committees such as Finance, Publications, and Marketing. E-mail historicl@ptd.net, call the office at 524-8666 or call me at 524-2085. Having personally been a member since 1968 and a volunteer since 1974, I can vouch for the rewarding experience these efforts can bring.

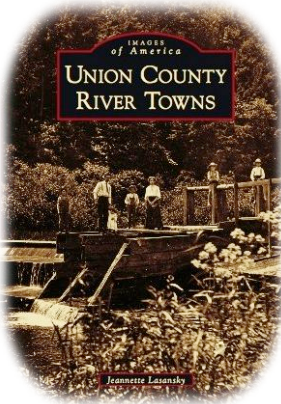
In the next newsletter, I plan to talk about bequest planning—another way to strengthen the Union County Historical Society. In the meantime you can request a copy of our updated Gifts and Endowment document that was shared at the annual John B. Deans dinner.

Remember—we are only an e-mail or phone call away and ready to serve you and the community.

*Jeannette Lasansky*, President

## NEWS

**Union County River Towns**, covers the history of Allenwood and nearby Spring Gardens, Devitt's Camp, and Alvira; White Deer, New Columbia, West Milton and Central Oak Heights, and Winfield through text and 220 historic images.

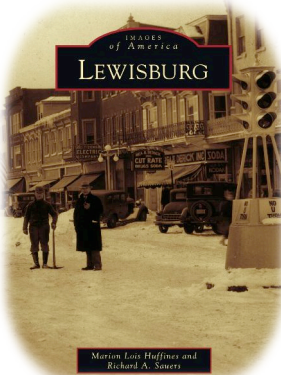


Jeannette Lasansky worked with Ardith Wilkins, Terri Stump, Bill Clemens, Susan Oldt Wirth, and Jack L. Fisher and more than 50 others who brought in photos and information. Bill Clemens and Alan Richard made the image scans.

This is the second of four books covering Union County (the first was *Lewisburg*) leading up to the county bicentennial in 2013.

Members' price is \$19.79 (plus 6% tax for PA residents). Shipping is \$4.

The pictorial history **Lewisburg** by M. Lois Huffines (of the Union County Historical Society) and Richard Sauers (of the Packwood House



Museum), shows the history of Lewisburg, Kelly Township and East Buffalo Township from earliest beginnings until recent times, through wonderful period photographs and text. A great book for reference and for gift-giving!

Members' price is \$19.79 (plus 6% tax for PA residents). Shipping is \$4.

**Building Pennsylvania** by Tom Rich (Bucknell professor of mechanical engineering), outlines the historical development of four major technologies: canals, iron and steel, lime and cement, and waterworks, in over 700 pages of text, charts, tables, illustrations and photos.

Pennsylvania's technological story is fascinating in its revelation of the ingenuity that transformed natural resources into the building blocks of modern society. The human story is equally poignant, of settlers and later generations who followed parents' footsteps.

On CD for PCs at members' price \$22.50 (plus 6% tax for PA residents). Shipping is \$4.

**African Americans in Union County: Slave and Free** is the latest in the biennial Heritage series published by the Union County Historical Society.

In this new book, Bruce Teeple discusses slavery and abolition in Pennsylvania, Jeannette Lasansky tells about slaves and slaveholders in Union County, and Sam Alcorn recounts West Virginia slave Charles Bell's flight to freedom. Catherine Hastings gives insight into the lives of African Americans in our area in the 19th and early 20th centuries. A list of African American gravesites in Lewisburg Cemetery is included.



African Americans in Union County: Slave and Free

Union County Historical Society  
Lewisburg, Union County, Pennsylvania

This new Heritage book is free with 2012 Society membership.

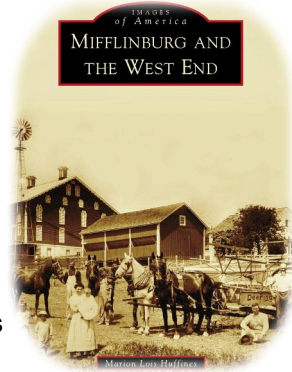
Order additional copies at \$13.50 members' price (+6 % tax for PA residents). Shipping is \$4.

**Mifflinburg and the West End** is due out in June 2012. It is sure to evoke memories and more than a few sighs about older times in Union County, in the same way that *Lewisburg* and *River Towns* enchant their readers.

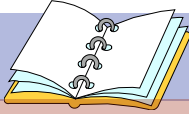
Authored by M. Lois Huffines, this third in the four-book collection tells the unfolding stories of Mifflinburg, Swengel, Millmont, Laurel Park, Pardee, Glen Iron, Weikert, Hartleton, and Laurelton. It is a history full of surprises and wonderful spirit. The

photographs represent the combined resources of the Union County Historical Society, the Mifflinburg Buggy Museum, and private collections.

The final book in the series will cover the original county seat of **New Berlin**, plus Vicksburg, Mazeppa, and the surrounding countryside. It is scheduled for publication in 2013, for the Union County Bicentennial Celebration.



**NOTE:** If ordering more than one book, shipping cost is \$4 plus \$1 for each additional book mailed to the same address.



## CALENDAR OF EVENTS

### February Black History Month Programs Concurrent Exhibit: Civil War documents from the collection. At the Dale/Engle/Walker House

Sunday, February 5 at 2 PM  
**Guided Tour of Dale House Hearth and Attic**



Jeannette Lasansky will guide visitors on a tour of the restored original kitchen and hearth, with period cooking utensils, where slave Dinah would have cooked, and the attic, where Dinah may have slept. The house exemplifies architecture of the late 1700's and the middle 1800's.

A new exhibit, "The War to End Slavery," features Civil War diaries, GAR records, Civil War Pension books, period medical equipment and more.

The tour, suitable for adults and older students, is free and open to the public.

Sunday, February 12 at 2 PM  
**"Pennsylvania's United States Colored Troops"**

Richard Sauer, author, military historian and Packwood House Museum Executive Director, will discuss the history of the eleven African American Civil War regiments from Pennsylvania. He will talk about the details of Pennsylvania's role in recruitment and training of African-American troops (known at the time as United States Colored Troops), the development of Camp William Penn, and the recruitment and training of white officers - all part of the northern US states' efforts to raise troops prior to 1863. This program, suitable for adults and older students, is free and open to the public. Reservations are suggested, as seating is limited: 524-8666 or hstoricl@ptd.net.

Sunday, February 26 at 2 PM  
**"Let's Take A Look at the Sable Arm"**

Linda Estupinan Snook, Civil War re-enactor and UCHS Education Coordinator, will present a program about African Americans in the Civil War.

The history of the battle for inclusion of African American troops to be allowed to serve in the American Civil War will be discussed from several perspectives. We will review the thoughts and feelings of Frederick Douglas, Harriet Beecher Stowe, Union soldiers and Southern civilians. A look at the thoughts of the African Americans themselves will also be included. We will be looking at the debate about inclusion in the Union Army. A surprise may be the exploration of the little known military service by African Americans before the Civil War.

After the power point presentation, there will be time for questions and answers. Handouts and bibliography will be available. The program, suitable for adults and older students, is free and open to the public. Reservations are suggested as seating is limited. Please call 524-8666.

#### **Directions to Dale/Engle/Walker House:**

from Route 15 in Lewisburg, take Route 192 west for 1.5 miles to Strawbridge Road. Turn north onto Strawbridge Road and go 1.5 miles to the property. Drive up the lane to the parking area beyond the house. Signs are posted. The house is handicapped accessible.

## Programs

Friday and Saturday, March 9 and 10, 9 AM to 4 PM both days  
**Maple Sugar, Scrapple and Sausage**  
at the Dale/Engle/Walker House, Strawbridge Road, Lewisburg, PA

Joe Sharp will demonstrate the process of making maple syrup and maple sugar as he boils maple tree sap by the corncrib at the Dale/Engle/Walker House. Mr. Sharp will have tapped some trees near the house, and will discuss tapping and the sugaring down process on an ongoing basis both days.

This will be a good time to get your maple syrup for the season (\*syrup will be available for sale\*) and appreciate the work involved in making the tasty treat that real maple syrup provides.

New to the event in 2012, Eli Reiff and family will demonstrate how to make scrapple and sausage, foods traditionally made in the winter months, and a few of many that went well with the natural syrup.

Parking is available at the house for buses, vans and cars. This demonstration is a free, public program of the Historical Society. Home school, private and public school classes are welcome to attend. Please call the UCHS at 524-8666 if you have any questions.



Thursday, April 12 at 6:00 PM

**"Memories of the Union County Sesquicentennial"**  
at the Union County Sportsmen's Club, Weikert, PA

### Program

Tom Deans, former president of the UCHS, will share his recollections of the Union County Sesquicentennial in 1963, when he served as chair of the events and program committees as well as editor of the Sesquicentennial booklet, "A Story of the County." Tom served under his father John who was the overall chairman of the Sesquicentennial Observance. Tom will focus on his efforts to make the observance a countywide event, relate interesting anecdotes, and discuss how events and activities, including the historical pageant, helped to bring people together on that memorable occasion, the county's 150th anniversary. We will celebrate Union County's 200 years in 2013.

### Dinner

The program will follow a buffet dinner at the popular Sportsmen's Club in Weikert.

Local members will receive dinner reservation information in the mail. Others interested in attending may call the Society office at 570-524-8666 or email [hstorici@ptd.net](mailto:hstorici@ptd.net).

Thursday, May 3 at 7:30 PM

**The Shorkley Family**  
at the Lewisburg Cemetery Chapel, 7th Street, Lewisburg, PA

Nada Gray will present a program on the Shorkley family, based on her readings of the diaries of Sallie and Elisha Shorkley. The Shorkleys are not as well known as the Camerons or Slifers, but they contributed to the community and county for several generations.

Elisha Shorkley gives day-to-day accounts of work at the Geddes-Marsh foundry, where he later became a partner.

Sallie (related to the Moores and Meixells) was actively involved in the University at Lewisburg (now Bucknell), the Baptist Church, the Grange, and the temperance movement. Nada became enthralled with Mrs. Shorkley after reading her accounts of every day life in Lewisburg in the 1800's.

Through their words you see the town's response to events in the mid 1800s.

Members of the Shorkley family are buried in the Lewisburg Cemetery.

The program, which is free and open to the public, will be held at the Lewisburg Cemetery Chapel, off 7th Street, Lewisburg. Parking is available along the street and in an adjacent lot.



## COLLECTIONS



### Archives & Museum Committee by Jeff Spotts

Visitors to the Dale/Engle/Walker House over the summer and fall months enjoyed an exhibit of items from the Society's and private collections, which represent distinct cultural traditions that slowly melted into the cultural history of Union County. From mirrors, to furniture and Pennsylvania's adaptation of European powder horn traditions, Union County draws from the diverse cultural influences of various persons and even regions of earlier Pennsylvania settlement. The collection of the Union County Historical Society and its Archives and Museum Committee (Committee) seeks to collect items of equal diversity.

Prospective donors of items are encouraged to contact the Society to learn about ways in which they can contribute tax deductible objects and financial support for continued efforts in building the collection. When contacted, the Committee strives to explain that its collection has a mission consistent with collecting diverse items focused on items made within Union County or significant to its history. Often times, items may not quite fit in the collection as items may be made outside of Union County but only tied to individuals living in the county. It is important to know who used items but by ensuring that items are made in the County, or otherwise important to historical events of the County, requires a careful balancing of interests. Donors are often surprised that a piece of advertising memorabilia, even from last year, is important to the collection as the group works diligently to capture many aspects of history for future generations to understand, study and interpret.

Each item that enters the collection carries with it a cultural tradition that represents a broader, but very local, focused context. The collection itself is a testament to the continued efforts to better understand a truly unique meeting of cultures within Union County. We continue to be very appreciative of the gifts and purchases that preserve items of the past for the benefit of the future.

#### Thanks to the following for these recent gifts:

- Donna and Drew Hyman, formerly of Winfield: 1850s Irish Chain quilt with impeccable needlework, a framed photograph of the Shreck sisters of Union County; and hooked rug by Mary (Baker) Wilber (deceased) of Vicksburg;
- The children of George B. Faries, MD: a framed photo by Donald Ross taken February 1, 1941 of the Battery C Field Artillery before departure from Lewisburg (complete with identifications);
- Jeffrey Hill, Muncy: Photo of Wolfe family of Cowan; and Emanuel Wolfe's discharge papers from the Union's 142d Pennsylvania Infantry, 1st Brigade, 3rd Division, 1st Corps;
- Ralph Gordon, Northumberland: Eight Union National checks from the 1860s to 1870s; and receipt from Union County Treasurer 1838;
- Gary Spangler: brace and bit for the wagon shed;
- David and Anne Goehring: cast iron Laurelton stove door made prior to 1937, from their camp "Little Mountain";
- Elwood Walter: hand corn planter for the wagon shed;
- New Berlin Heritage Association: water regulator from the White Springs Mill;
- Alan Richard: rare real photo postcard of Yankee Spring, Winfield;
- Dave Mensch: four colored lithographed postcards of Laurelton Village;
- Julia Kister: rare candid photograph of bride throwing bouquet from balcony at Hopp Inn, Mifflinburg;
- Doris Marino: scrapbook of photographs taken of the 1936 flood at Lewisburg, postcards, and 13 loose candid photos of the '36 flood (all with identification);
- Becky Calder: souvenir china of Lewisburg purchased at the 5 & 10 cent store on Market Street by her mother Martha Joran Eisenhower;
- Daniel Shade: 1966 photos of an iron mine discovered in the making of the eastbound lane of Interstate 80 in White Deer Twp;
- Nancy Weyant: photographs by her father Frederick Strong over the past two decades of Lewisburg events;
- Gloria Walters: photograph of dentist Dr. Seebold, Lewisburg from circa 1940; and
- Roxy Carl: many old photographs.

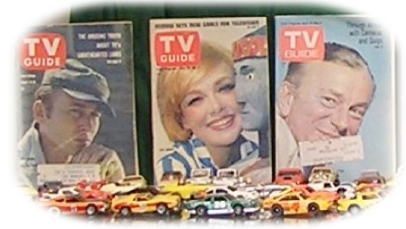
**Recent purchases include:**

- Mifflinburg Federal Food Stock Box for the wagon shed;
- thermometer from Shirks Store, Millmont, and china plate depicting the Soldiers and Sailors Monument in Lewisburg, for Harry Hoffman's business;
- New Berlin cookie cutters from 1996, 2000-2002, 2004-2006, and New Berlin cook-book *George Washington Never Ate Here*;
- more cook books: *Taste of the Times*, 1984, Mifflinburg and Christ Community Church Cookbook, Millmont, 2003;
- many 20th Century calendars from Millmont and Hartleton businesses;
- Forest House (Forest Hill) cabinet photo and beer token;
- Crystal Springs milk bottle and Citizen's Milk advertising comb (early Bechtels);
- pitcher with Tustin Gym from c. 1900;
- advertising pen from Steininger's Restaurant in Lewisburg;
- milk cap pick from C.E. Stimeling Dairy, Lewisburg;
- and several commemorative items from the Federal Correctional Facility in Allenwood.

**Exhibits**



**Courthouse Collections Exhibit**  
During 2011, the Union County Courthouse lobby featured monthly displays from the collections of courthouse staff - so interesting and so diverse.



**An Invitation**

Do you collect something? Society members are invited to join the 2012 exhibit schedule. Available months are: April, July, September, October and November.



**DETAILS:** Each exhibit runs for one month, from the first to the last (business days) of the month. The exhibitor brings in and arranges their items as they wish (assistance is available from UCHS staff). The case is approximately eight feet long by six feet high by one foot deep; there are several removable shelves. The case is locked.



**TO PARTICIPATE:** Please tell us what your collection is and, which month you would like to exhibit. We will accept exhibitors on a first-come basis. Contact the Society at 524-8666 or [hstoricl@ptd.net](mailto:hstoricl@ptd.net).

**"Meeting of Cultures" exhibit**

Two typical Pennsylvania German bedcovers, a coverlet and a quilt, are on display at the Society's courthouse office.

Additional items such as frakurs and cookware are at the county government center on N. 15th Street, Lewisburg. If you missed the exhibit over the summer, or want to check it out again, here is your chance.



**Collectors Note**

The Society is provided a glass case at Roller Mills Antique Mall, St. Mary Street, Lewisburg (just off Rte. 15). We sell advertising items, old post-cards, early glass and china, books, and more. Some items have been donated for us to sell. Others are de-

accessioned from our collection as items are replaced by better examples. Deaccessioned pieces are sold or given to other groups, as appropriate. This allows the Society to continue to add to our collection. We thank Roller Mills Antique Mall for their support.

## RESEARCH LIBRARY UPDATE



### Added to our family books and newsletters:

*Descendants of Willem Hendricks; Samuel Hendricks c. 1735 - 1810 of Montgomery and Snyder Counties.* Prepared and donated by Frances W. Waite.

Keefer Family Association Newsletter, 2011 issues.

*Pawling Genealogy*, by Albert Schoch Pawling (1905), revised for 1905-1984 by Harold Danowsky.

**NOTE:** Copies available at no charge; please ask.

*The Christian Showalter Family.* Donated by Tom Finsterbush.

*The Frederick Smith Ancestry.* Donated by George Smith

*The Walkers of Union County & Related Families*, Written and donated by Rev. Dr. Robert Stoudt.

*Pross Families of Union and Blair Counties*, by Carol Bickel. Donated by the author.

### Added to the library:

*Leaves Driven Before the Storm: The Civil War Service of the Kline Brothers of West Buffalo Township, Union County, PA, and the Effect on Their Lives* by Stanley L. Zellers.

Donated by the author.

*A Stroll Through New Columbia* by Terri Stump. Donated by the author. Copies available for purchase.

### Members and recent visitors to our library are looking into the following families and topics.

If you have information to share, please contact the office or the researcher.

DEIBERT: Sam & Evelyn Guzman, Vreeland Ave., Bergenfield, NJ 07621; evezuz@verizon.net

KUHN, WEIRICK: Christopher Kuhn, 2701 Irondale, St. Louis, MO 63129

LOSE, STERNER, REYNOLDS, ALGURT, WILLIAMS, MARTIN: Drew Houseman, Beal, DE;  
dhouseman@wilmingtonparking.com

CRABB: Marcia Lee-Bogart, 311 14th St., Northumberland, PA, 17857; bkydarts@evenlink.com

BELL, DEFRAIN: William Higgins, William\_Higgins@hotmail.com

HULSIZER, MONTGMERY, KELLY, HARTER: Joan Harrison, 1163 Red Rose Lane, Villanova, PA 19085

BOOB: Mary Shull Muirhead, 715 Highwood Drive, Baltimore, MD 21212

HOFFMAN, KREBBS: Carol Hoffman, 243 Healy Rd., Shinglehouse, PA 16748

EMERY: S. Megruly, 178 Morris Rd., Orangeville, PA 17859

ALEXANDER, JOHN: Saranna Miller, PO Box 506, Marietta, PA 17547

BENNAGE: Anne Plaisance, 1015 Pleasant View Rd., New Columbia, PA 17856

SHOWALTER: Scott & Sharon Adrian, Harmon Dr., Fremont, MI 49412

HEPBURN, JAMES CURTIS: J. Shiba, Meiji Gakuin, Tokyo; jjshiba@gmail.com

GORDON: Connie Soulies, Millersburg, PA rsoulies@epix.net

AIKEY, OBERDORF, CONFER, FORNAY: Mary L. Dunphy, 245 Lehman Dr., Cogan Station, PA 17728

SHOWERS, SHAFFER: Jo Larson, 12418 Jerusalem Rd., Kingsville, MD 21087

GRIM: Eugene & Joyce Curtis, 4040 E McLellan Rd., Mesa, AZ 85205

REAM, AURAND, FREDERUCK: Deborah Lalonde, 56 Lark Ave., Brooksville, FL 34601

MOOK, REICHERT, HERBST: Vern Erickson, 1748 Sugar Run Trail, Bellbrook, OH 45305;  
vehouse@aol.com

PAWLING, HUMMEL: Karen Nace, 9206 Mitchell Bend Ct., Granbury, TX 76048

BEACHAM, SNYDER: Jo Simpson, 474 Chetola Rd., Seneca, SC 29672

PURSELL, ROSS: Carolyn Williams, 306 Mahoning St., Milton, PA 17847

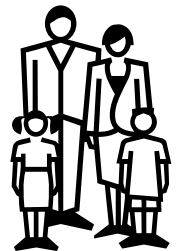
BRYAN: Mary Sieminski, 419 Shady Knoll Rd., Montoursville, PA 17754; or Jane Luther,  
hjluther@verizon.net;

RUHL: Bob Stoudt, 4808 Tamar Drive, Harrisburg, PA 17111; bobstoudt@aol.com

SOLOMON Family: Theodore Solomon, TSolomon2216@comcast.net

WILSON, CHARLES W., Civil War Co. E, 51st Reg. and

HUGH WILSON, Union County Judge: Bob Beck, 103 Ruskin Dr., Altoona, PA 16602





## RESEARCH SERVICES

The Historical Society will research family history through search of our reference material and courthouse documents. Submit your research request via email or US mail to the Society office.

**Genealogical research** ranges from the search for a single document (such as a will or obituary) to complete family history. Fees are \$5 (single document) to \$35 and up (full search) depending on the complexity of the search.

**Deed search** fee is \$50 - \$100 to trace deed to earliest county record available. Includes maps of property. Deed searches are negotiated on an individual basis.

**DIY:** The Society staff is always glad to help members and visitors do their own research; come to the office to learn more: Monday through Thursday, 8:30-4:30. Look at the *Primary Source Materials* list on our website to see all the documents and data available.

## WANTED

We have requests for the following out-of-print Heritage books. If you have a copy you wish to sell or donate, please contact the UCHS office 570-524-8666.

*Volume V*, 1976; *Volume VIII*, 1982; *Volume IX-X*, 1984/'86 (Centennial History of Lewisburg); *Volume XII*, 1990; and *Volume XIV*, 1994.

**Photos Sought** Do you have old photos or photo postcards of Union County businesses, farms, parades, trains, schools and school children; family, political and civic gatherings? We especially seek photos of the north and west parts of the county, including Hartleton, Laurelton, Mazeppa, New Berlin, Vicksburg, West Milton, and Winfield. Images may be donated or loaned for use in the calendar project or upcoming books.

Please contact us to discuss this opportunity to share your photos with others.

## First Issue of *ACCOUNTS* now On Line

The first issue of *ACCOUNTS* of Union County History, the Society's new on-line journal, is now available! Just go to the Society's website ([www.unioncountyhistoricalsociety.org](http://www.unioncountyhistoricalsociety.org)) and click within the box on the lower right. You will enjoy reading its six essays about county history:

*Gideon and Elizabeth Smith of Buffalo Farm* by Nancy M. Neuman

*Warren "Short" Dietrich's Milk Route* by Mark Wehr

*Iron Smelting in Union County* by Tom Rich

*Look Up!* by Deane Clements

*Dining at Bucknell from 1846 to 1946* by Russell Dennis

*William Long and Alcatraz* by Robert K. Lynch

As you read the essays, you will probably have the thought, "I could write something like that." Indeed you can. I invite any member of the Society (and others) to send an essay. *ACCOUNTS* is not reserved for scholars; no footnotes are needed. Rather, *ACCOUNTS* is a resource for anyone who wants to share and make permanent an item about the history of our county. Essays generally run between 3 and 10 double-spaced pages. A variety of items are being sought, such as:

- Accounts of events in Union County's history
- Accounts from family history
- Accounts of the lives of persons associated with the county
- Accounts of businesses, churches, communities and locations
- Descriptions of objects and their makers (furniture, buggies, etc.)
- Accounts of buildings (homes, barns, churches, bridges, commercial buildings, etc.), monuments, public works

The 2012 issues of *ACCOUNTS* will appear on the Society's website in March and October. I am now accepting essays for both issues. As editor I will be pleased to work with you to develop your essay from idea to finished manuscript. Do let me hear from you.

*Tom Greaves*, Editor, *ACCOUNTS* of Union County History  
[greaves@bucknell.edu](mailto:greaves@bucknell.edu); 570-523-8880

## PEOPLE MAKE A DIFFERENCE

### Annual John B. Deans Dinner and Program

Society members and friends gathered for an enjoyable evening on November 10, 2011 at the Carriage Corner Restaurant in Mifflinburg.

**Stan Zellers**, in period Union Army uniform, presented "Leaves Driven before the Storm: The Civil War Service of the Seven Kline Brothers of Union County and Its Effect on Their Lives." The Kline family of Mifflinburg is remarkable in that seven brothers fought in the war. Zellers research gives a closer look at Union County's involvement in that time of great agony and glory.

The Society presented awards to individuals whose efforts support the appreciation and understanding of local history, our historic environment, and our community.



### 2011 Awards



**Jack Fisher** of Lewisburg received the **Outstanding Service Award** for his volunteer genealogical research, documentation of trades people, detailed deed searches and land histories, assistance with book and

calendar projects, and instruction of Society staff and students. Jack is an important contact for many Historical Society visitors and correspondents seeking to document their family history.



**Robert Lynch** of Mifflinburg received the **Historic Preservation Award** for leading the restoration of Mifflinburg's historic Elias Church, built in 1806, the oldest existing church building in Union

County, and possibly the oldest wooden frame church still standing in Pennsylvania. The church will serve as a center for the performing arts, a cultural focal point of music, theatre, art and educational programming steeped in German heritage.



**Stephen Huddy** of Williamsport, and **Paul Metzger** of Mountoursville (seen here on right and left with Jeannette Lasansky) received the **Outstanding Achievement Award** for playing a pivotal role in recording and presenting the story of the town of Alvira in Gregg Township, Union County. Using extensive mapping, extant photographs, written documents, and oral histories, they have presented us with "Alvira and the Ordinance: an American Dream Denied" through programs, exhibits, and publications. The Society is grateful that this story can be told, retold and not forgotten because of their efforts.

Copies of Huddy and Metzger's book, *Alvira and the Ordinance: An American Dream...Denied*, and the accompanying *1942 Map of Landowners* are available for purchase at the Society office.

### Dave Milne

It is with deep sadness that the Society notes the passing of life member Dave Milne of Lewisburg. Dave was a professor of Psychology at Bucknell University for 35 years, ten as department chair.

Dave served as Treasurer of the Historical Society from 2006 to 2010. He also was a regular volunteer in our office on Fridays, and at *Rural Heritage Days*. We appreciated his work for us as well as his insights, his kindness and delightful sense of humor. He is missed.

## Notes from a Summer Intern by Rebecca Jane Mapes

Giving tours at the Dale/Engle/Walker house was a great experience that gave me more leadership skills. I met some interesting individuals who all gave me different life lessons, or information about the house I didn't know.

For instance, one man, an architect, told me how he thought the house was designed, while a woman really liked the fireplaces and knew how Rosie Walker remodeled them. The people were unique, and I am very grateful to have met each and every one of them. Although some brought knowledge to the tours, other posed questions that I couldn't answer.

The most frequent question I received was why the house wasn't furnished. That got me thinking about how each room could show what life was like in the Dale period.

Another question was if Mr. Dale was involved in the Free Masons. This was asked because a visitor noticed just one stone on each side of the house that was the same shape as the Free Masons' symbol.

One lady asked if we changed our exhibit

to be festive during holidays. I later learned that we do not, but I thought this would be a great addition to the house, maybe what the house would have looked like at Christmas, or a Haunted Tour around Halloween (since there is the legend of the Black face.)

The last topic that was asked somewhat frequently was about the clock (on permanent display) in the main exhibit room. People like the clock, and wanted to know more about it. A little blurb about who made the clock and if it still works would be a great addition to the tour.

Thank you to the Historical Society for giving me this great experience. I hope that my input helps to answer future visitors' questions.

*Editor's note: Rebecca Jane "Becky" Mapes, a delightful young lady from New Berlin, worked for the Society over the summer 2011. She was a great help to us in the office, doing research, and giving many tours at the Dale/Engle/Walker House. At the end of summer, Becky returned to her studies at Penn State.*

*Contact us about internships at the Society.*

## VOLUNTEERS

**We thank** Judith Blair, Jack Fisher, David Goehring, Tom Greaves, Marj Kastner, and Glenda Sheaffer for volunteering on Fridays. We appreciate the research help provided by Mary Belle Lontz, Jack Fisher, and Glenda Sheaffer.

**Won't you become an active part of your Society!?** Volunteer in the office on Fridays - learn about local history while assisting visitors with research and helping on office projects. Join a committee. Please give us a call. **Get involved!**

## NEW BOARD MEMBER

**Sharon Lynch** grew up in Chattanooga, Tennessee, and graduated from Middle Tennessee State University in sociology with certification in secondary education social studies. She served two years in the Peace Corps in Kpandebu, Sierra Leone, where she taught upper elementary level reading and math. She has since taught in a variety of educational settings: alternative education for court adjudicated youth in Tennessee, American history in high school in north Georgia, a self contained classroom on Lookout Mountain, and 28 wonderful years of teaching world history and

reading in Mifflinburg Middle School. Sharon retired in 2011 after 35 years of teaching.

Forty years ago she married Bill Lynch who had also served as a Peace Corps volunteer in Sierra Leone. They moved to Penns Creek, Pennsylvania, in 1978 to begin their family and to establish Bill's pottery in Sampsell's mill, a nineteenth century flour and grist mill on Penns Creek. Bill, Sharon, and their children, Ben and Emily, appreciate our local history, and their mill is an excellent example of adaptive restoration.

Sharon looks forward to learning from and serving Union County's Historical Society.

## Opportunities to Serve

The UCHS nominating committee (comprised of Tom Greaves, chair; Gary Spangler and Mark Wehr) is presently working to fill positions for secretary, and three 3-year term board members. The board-approved slate will be presented in the Society's summer newsletter and voted upon at our September 2012 program. Feel free to contact these gentlemen to share your thoughts.

## Education Coordinator's Report by Linda Estupinan Snook

The Mifflinburg 4th grade classes participated in the Mifflinburg Walking Tour, and in lessons at the Red Bank School, which were preceded by in-class presentations, to prepare the students for what they will see, hear and learn in these fun, educational opportunities. The Sunbury Christian School also attended Red Bank School for this unique experience in one-room schooling.



The "Pledge of Allegiance" lesson was presented to a Millmont home school group at the Red Bank School. This lesson had been given to Mifflinburg and Linntown students earlier in the year.

Already planned for April 2012 is the power-point lesson "The War of 1812" for a Mifflinburg home school group at the Red Bank School. This home school group has indicated an interest in the pledge lesson as well as spending some time at the Red Bank School. Also planned for Spring 2012 are the bus tours to historic sites in the county that Mifflinburg students annually enjoy.

It has been a wonderful school year as usual, and I am looking forward to the 2012-2013 school year.

Mrs. Snook and the Historical Society received thank you notes from the students who attended the Red Bank one-room school program. Here are some of them:

*Thank you for giving your day to show us how it would be to go to school in the 1800s. I especially liked the games you taught us so we could have fun without electricity.*

*Thank you for taking me back in time. I loved those games you taught me. And the poem "The Bee and the Flower" is the best.*

*Thank you for letting us into the Red Bank School. I had a great time. Thank you for recess, all the things we learned, and letting us take turns sitting in the corner even though we weren't bad.*

*Thank you soooo much for letting us come to the Red Bank schoolhouse. It's such a wonderful place! I'm glad it's still here today!! I love how you let schools come there to visit and learn.*

*When you took us back to 1893 I was thrilled. My favorite part was playing with the whirly birds. I also liked learning the poem and learning the pledge. But the best thing of all is when we wrote our papers using quills. Also recess...was totally awesome.*

## Rural Heritage Days by Deb Wehr

The Union County Historical Society has held **Rural Heritage Days** in mid August for the past seven years. The 2011 theme, *A Meeting of Cultures: Pennsylvania Germans & Their English Neighbors*, was illustrated in Wednesday's Children's Day activities, and in Saturday's demonstrations and exhibits. Thursday evening, Eli Reiff spoke on the history of (German) Plain Sects in Union County. On Friday, the Tir na Nog Dance School gave an Irish dance workshop and performance. Attendance for all of the programs this year was above average. We thank all who contributed to making *Rural Heritage Days* a success.

In 2012, *Rural Heritage Days* events will focus on the science available to residents of the Dale/Engle/Walker House: the chemistry of cement, food preservation, the magic of fermentation, papermaking; the power of the fulcrum, lever, pulley and wheel. We are actively planning for another fun and interesting series of events for **Rural Heritage Days - August 15-18, 2012**. Mark your calendars and spread the word!



### **PastPerfect Update by Deb Wehr**

**PastPerfect** is computer software that is used to catalog museum collections and manage contacts, donors and related data.

**An accession** is an item or group of items acquired by UCHS at one time. Grouping items into accessions allows us to associate all items from a common source at a specific time.

For example, if someone donated a collection of letters from Samuel Dale, and later another donor added Samuel Dale's journal to our collection, the accession numbers assigned to each item would quickly tell us the donor and when it was donated.

Other information about an item is added into our new software, PastPerfect, such as condition, dimensions, maker, history, provenance, storage location and digital photograph(s). In addition, PastPerfect has space and prompts us to include many other details about each item.

The more we know about items in our collection, the more valuable they become. As we make this information more accessible, the more valuable our collection becomes. Therefore our goal is to record as much information as possible about each item in our collection, making it accessible via PastPerfect.

During January and February of 2011, data from our old, outdated software had been loaded into PastPerfect, after modifications to make it compatible.

Since that time, work has been done to enter new items in a timely fashion, as well as go back to items already in the collection to enter more information. This is a big job, since the Archives Committee frequently receives gifts and also actively collects throughout the year. We "endeavor to persevere", as Teddy Roosevelt would have urged us, keeping our goal in mind.

### **The Dale/Engle/Walker Property**

As is customary at this time of year, we begin to plan for our spring work projects at the Dale/Engle/Walker property.

In April, we will work one Saturday morning with Bucknell students, Merrill W. Linn Land & Waterways Conservancy members and staff, and Society members on priorities developed with our volunteer property and assistant property managers, Jeannette Lasansky and Bill Deitrick. Already their work list is established after the successful effort in early November. Included are tasks such as general yard cleanup; weeding landscaped areas beside and behind the house, red shed, corn crib, and by the barnyard, as well as filling pot holes in the lane, and "ground hog holes" where possible.

Jeannette will work with volunteer, professional painter Jim Arndt on scraping and painting the porch ceiling, exterior window muntins as well as some interior repair.

Bill hopes to be working with a new Eagle Scout on an irrigation system in the gardens behind the house. Rod Hepner has volunteered materials and assistance for this project.

Also, our second Dale/Engle/Walker scrapbook will be readied for group tours that begin in April followed by the regular tour season in June.

Lastly, an exhibit on Civil War material is now being assembled from our collections for "The War to End Slavery: the Civil War." It will first be on view during Black History Month 2012 and may be extended into the summer months.

We look forward to seeing you at the house at February programs, and for tours during the summer months.

### **CHANGE OF ADDRESS**

If you know you will be moving, please notify the Society office ahead of time, by mail, phone or email. Also tell us if you are "temporarily away" (post office term for short absences). Our newsletter is sent bulk rate and will not be forwarded by the post office; it will be returned to us at first class rate.

### **E-option**

Please let us know if you prefer a PDF, full-color newsletter sent via e-mail by sending us an e-mail: [hstoricl@ptd.net](mailto:hstoricl@ptd.net). This saves the Society on printing and postage costs. Thank you!

Union County Historical Society  
Union County Courthouse  
South Second & St. Louis Streets  
Lewisburg, PA 17837

Return Service Requested

Non-Profit  
U. S. Postage  
PAID  
Permit No. 64  
Lewisburg, PA 17837

**Membership in the Union County Historical Society** supports our annual historic sites tours and Red Bank one-room school experience for Union County students; programs and tours; and the growth of our collection of Union County photos, postcards, account books, diaries, and items made by Union County crafts people. Membership also enables us to restore and maintain the Dale/Engle/Walker House, which offers tours, exhibits, programs, and *Rural Heritage Days* events. Members receive the biennial *Heritage* publication and our newsletters, a discount on books, and free use of our extensive reference library.

Mail this application form to:  
Union County Historical Society, 103 South Second Street, Lewisburg, PA 17837  
Contact us by: Phone: (570)524-8666 ♦ E-mail: hstoricl@ptd.net  
Check out our Web site: [www.unioncountyhistoricalsociety.org](http://www.unioncountyhistoricalsociety.org)

Name(s) _____	Please circle membership level:
Address _____	NEW! Student (K-12)..... \$10
City _____ State _____ Zip _____	Individual ..... \$30
Email _____	Family ..... \$45
Phone (H) _____ Phone (W) _____	Contributor ..... \$60
	Patron ..... \$100
	Sponsor ..... \$150
	Lifetime (individual) ..... \$400

The Union County Historical Society is a non-profit organization. Membership is tax deductible. In addition to membership, donations specific to the Society's work - education, the collection, genealogy, the Dale Library, or the Dale/Engle/Walker property - are gratefully accepted. Unrestricted donations are used as the Board of Directors feels there is a need. The Society is prepared to accept gifts of appreciated property and planned giving, such as bequests. Thank you for your support.